

Installation Instructions: 09124

Date	Revision
1.3.2024	1

Read these instructions before installation and retain for future reference

This equipment should be installed by a competent electrician



Important Information

We recommend that luminaires are installed by a qualified electrician ensuring the installation complies with current IEE wiring regulations BS7671:2018 & local building control.

- All tests should be carried out in accordance to EN 50172:2004.
- BELL will not accept responsibility for any claims arising from poor installation.
- The light source of this luminaire is not replaceable, when the light source reaches end of life, the whole luminaire must be replaced.

Important User Advice

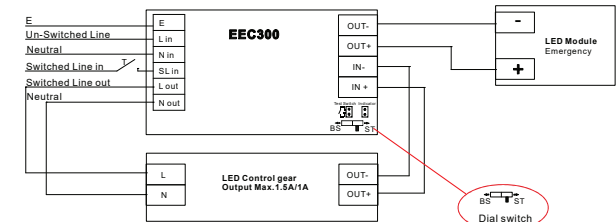
- The ambient room temperature should not exceed 35°C.
- Ensure that there is adequate free air ventilation around the fitting.
- Always switch off mains supply before installing.

Specification

- Supply Voltage: 220-240VAC 50/60Hz
- Ambient Room Temperature: 0 to 35°C
- Maximum Casing Temperature : 70°C
- Battery Recharge Time: 24 hours
- Wattage: 2.5W
- Emergency duration: more than 3 hours
- Output Voltage: 10-300VDC
- Maximum Output Current: 170mA
- Battery installed: LiFePO4 3.2V 3000mAh
- Deep Discharge Protection DDP
- Maintained or Non-maintained Operation
- Emergency Converter Dimensions (LxWxD): 234x40x26mm

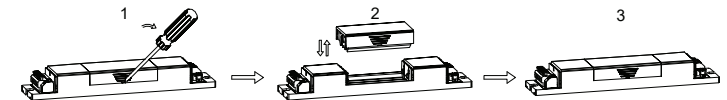
Wiring Diagram

- Ensure the AC supply is switched off.
- Connect the battery cartridge into the emergency convertor.
- Connect the emergency convertor to the supply lines, LED driver and LED module as shown in the diagram, ensuring correct polarity is maintained.
- Connect the Indicator LED and Test Switch to the emergency convertor.
- Select the system mode using the on-board switch, push left for BS Basic (Manual) test mode, or push right for ST Self-test mode.
- Switch on the AC supply.



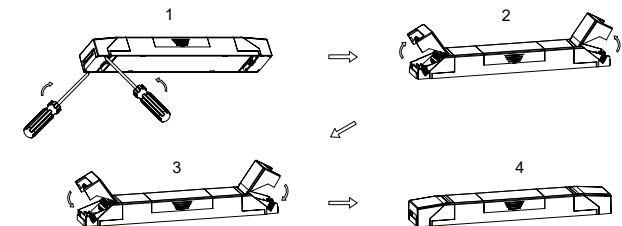
Battery Replacement

- As shown in the diagram, insert a screwdriver into the hole and rotate to pry the battery cartridge loose.
- Take out the battery cartridge.
- Snap the new battery cartridge down to complete the battery cartridge installation.



Strain Relief Covers mounting options

- Use a screwdriver to pry open the strain relief covers.
- Do the wiring and other operations.
- Flip down and click in the covers to complete the installation.



Installation Instructions: 09124

Date	Revision
1.3.2024	1

Read these instructions before installation and retain for future reference

This equipment should be installed by a competent electrician



Functionality of the test switch

- A short press (1s) on the button starts a function test lasting 5 seconds.
- Holding down the button (>10s) resets the timer (System reset)

Functional test – Self-test Mode

- The functional test lasts for 5 seconds and occurs every 7 days, to check the functionality of the emergency unit, the batteries and LED module.

Please note: If a mains supply failure occurs while a functional test is in progress, the test shall be postponed, and the system will enter emergency operation. Following restoration of the mains supply, a postponed functional test shall re-commence automatically as soon as conditions permit.

Duration test – Self-test Mode

- 24 hours after installation, a 3-hour duration test is performed.
- 3 hour duration tests are performed every 180 - 182 days to check the battery capacity.

Please note: A duration test will only be started once the battery is fully charged and if a mains supply failure occurs while a duration test is in progress, the test shall be postponed, and the system shall enter emergency operation. Following restoration of the mains supply, a postponed duration test shall re-commence automatically once the battery is fully re-charged.

The indicator will be slow flashing Green for 5 days once the duration test has been carried out successfully.

Indicator LED System status is by the bi-colour indicator LED.

LED Indication	Status	Description
Permanent Green	Standby, System OK	Mains operation, battery is charged
Fast flashing Green (0.25s on 0.25s off)	Function test underway	Function test underway
Slow flashing Green (1s on 1s off)	Duration test underway	Duration test underway
Permanent Red	Lamp failure	Open Circuit or Short circuit or LED failure
Fast flashing Red (0.25s on 0.25s off)	Battery capacity failure	Battery failed duration test
Slow flashing Red (1s on 1s off)	Battery fault	Incorrect battery voltage or Short circuit or OpenCircuit
Green and Red off	Battery Operation	Emergency mode: Mains disconnected or Mains failure

Please note:

- Fault status: If an error is detected, the indicator LED switches to **RED**. Once the error has been corrected, after re-connecting the battery with the mains power disconnected, the indicator LED will switch back to **GREEN** when mains power is re-applied.
- Battery failed duration test: After an exchange of the battery and holding down the button (>10S) to reset the timer, the indicator LED will switch to **GREEN**
- Always select the desired test mode before applying the power. Do not switch test mode whilst the luminaire is powered.
- If Self-test mode is selected, additional Manual tests are not required and if performed, will cause premature failure of the battery.

This product may contain substances that can be hazardous to the environment if not disposed of properly. Electrical and electronic equipment should never be disposed of with general household waste but must be separated for its correct treatment and recovery.

Where possible recycle your packaging.

